

Bendcart BC-100 assembly instructions

Remove all Cardboard

Review drawing on page 3 and 4 of instruction pack.

Pump Tray

Mount the pump tray by lowering the long bar down into the pump tray support tube on the back of the Bendcart

Mount Bender Supports (2)

- remove the 3/8" bolts and spacers
- slide the bender supports over the frame top and cross member with the support pins pointing away from the saddle and shoe storage posts
- reinstall spacers and bolts
- tighten bolts

Mount Conduit Holddown wheel

- raise the follow bar support above the level of the rear wheels by turning the adjustment handle
- remove the cotter pin and washer from the follow bar support tube
- slide the conduit holddown wheel assembly onto the follow bar support tube and reinstall the washer and cotter pin. Bend the ears of pin to secure.

Bendcart

model# BC 100

Instruction manual and parts identification

The Bendcart is designed for use with the Greenlee #885T Hydraulic 2-1/2" to 4" EMT benders and the #881 and 881CT 2-1/2" to 4" EMT and GRC bender.

SAFETY

Safety is an important part of the workplace. In addition to the normal workplace safety measures there are specific precautions that should be taken when using the Bendcart:

- Be sure all pins are installed in the proper locations
- Visually inspect the bender to see that it is properly mounted and that there are no parts missing or binding.
- Use proper lifting techniques when loading bender and changing parts
- Use only on a level surface
- The Bendcart is heavy, especially with extra shoes. Be very careful if moving over uneven or sloping ground.
- The brakes are designed only to prevent the bender from moving when loading conduit. They should not be relied upon when transferring or storing this unit.

LUBRICATION

The swivel wheels have grease fittings and should be greased every 6-12 months. A light lubrication oil should be sprayed on the follow bar adjustment screw every month.

MOUNTING THE BENDER (If you are mounting an 881 bender using the **881A** adapter consult the mounting instructions included with that piece of equipment.)

- Slide one of the bender side bars onto the bender support pins (see page 3)
- Slide the hydraulic cylinder onto the bender support pins
- Slide the second side bar onto the bender support pins
- Install the 2 hairpins into the proper holes to secure the bender to the Bendcart. (NOTE: the 881 bender uses the outer holes, the 885T uses the inner set of holes)
- Install the follow bar roller
- Turn the follow bar adjustment handle to raise or lower the follow bar support until it is approximately level with the top of the follow bar roller
- Lay the follow bar support strip across the follow bar support and the follow bar roller with the warning labels up.

CAUTION: The support strip is not necessary for the proper operation of the bender. It should not be used if it does not fit loosely between the steel rails of the follow bar since it could cause damage to the follow bar and/or the support strip. We are now using the adjustable follow bar support pegs (Part # BC100-0900) in lieu of the follow bar support strip.

- The appropriate follow bar should be installed so that one end is resting on the roller and the other end is resting on the follow bar support with the follow bar ears outward. (NOTE: The bender may have to be slid back if the follow bar doesn't rest on both the roller and the follow bar support. The bender supports are designed so that the bender can be slid either forward or back as necessary.)
- Set the pump in the pump tray and connect the hose to the ram. You may find it useful to purchase 90 deg hydraulic fittings for the pump and cylinder. (NOTE: the pump should be secured to the pump support with bungee cords, wire or other means.)
- Set the appropriate shoe onto the follow bar and connect it to the ram yoke (NOTE: this may be made easier by pumping the ram down several inches.)
- Install the saddle and the operation is complete.

BENDING CONDUIT

- Slide conduit onto follow bar and under the conduit support wheel
- Install the saddle (NOTE: for a one man operation you may find it easier to pull the shoe back and up with a wire, bungee cord , or some other means so that the saddle is touching the front of the follow bar. Don't forget to remove the wire or cord before bending!!!!)
- Start bend
- Adjust the follow bar support adjustment handle so that the conduit behind the shoe is level.
- Bend conduit. For accurate bends using a protractor, readjust the conduit for level when you are within a few degrees of the desired bend.

WARNING: If the conduit is not properly aligned there is a possibility of the saddle pin getting caught under the Bendcart crossbar when making 90 deg bends. This is more of a problem on smaller conduits as the pin can extend thru the saddle several inches. Be sure that the conduit is centered in the bender and is parallel to the Bendcart when starting the bend.

MISCELLANEOUS

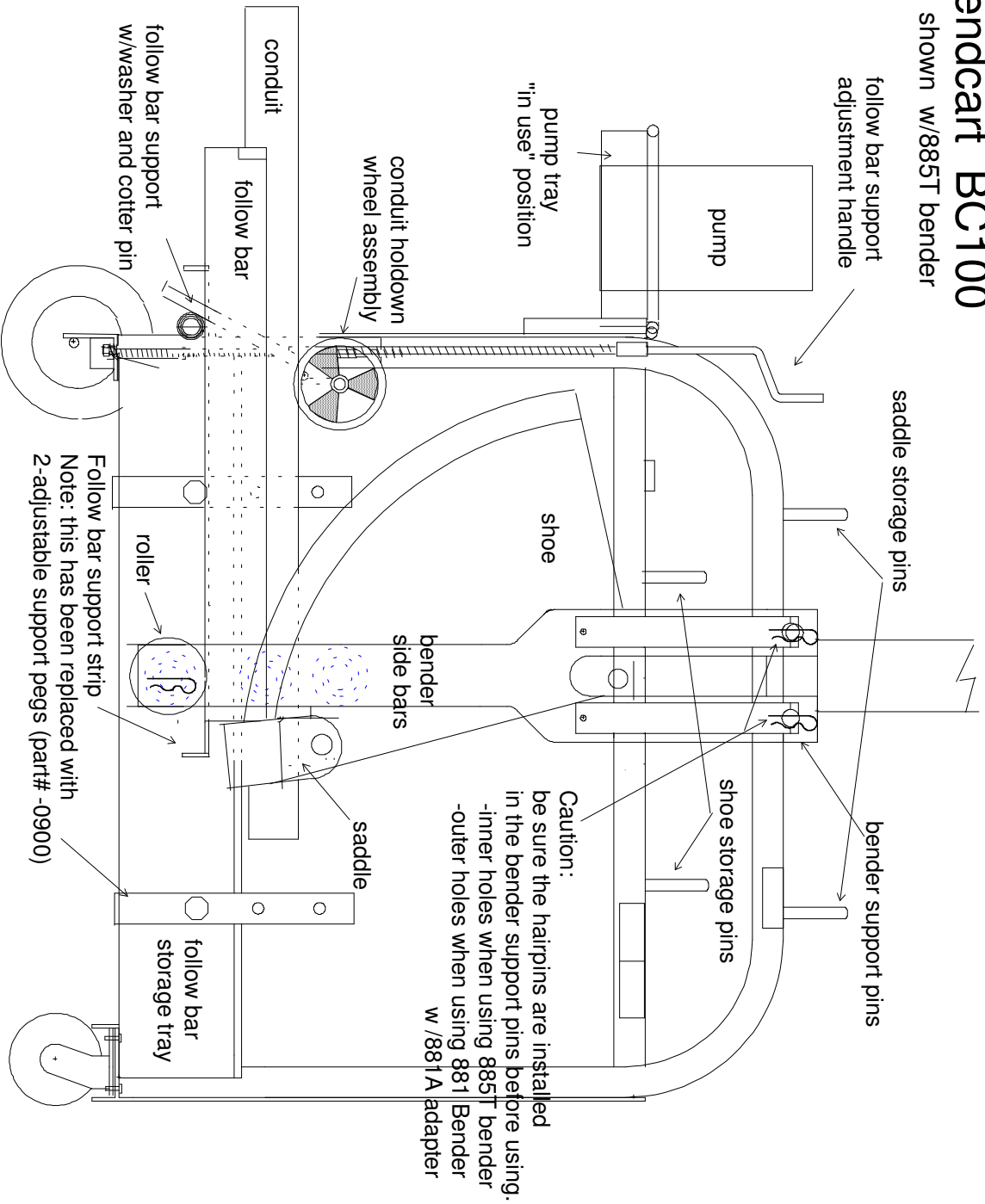
- See page 3 for the positions of the pump tray when not in use.
- The unit can be made reasonably secure by threading a heavy chain through the saddles, through the holes of the shoe, through the pump handle and around the bender.

TIPS

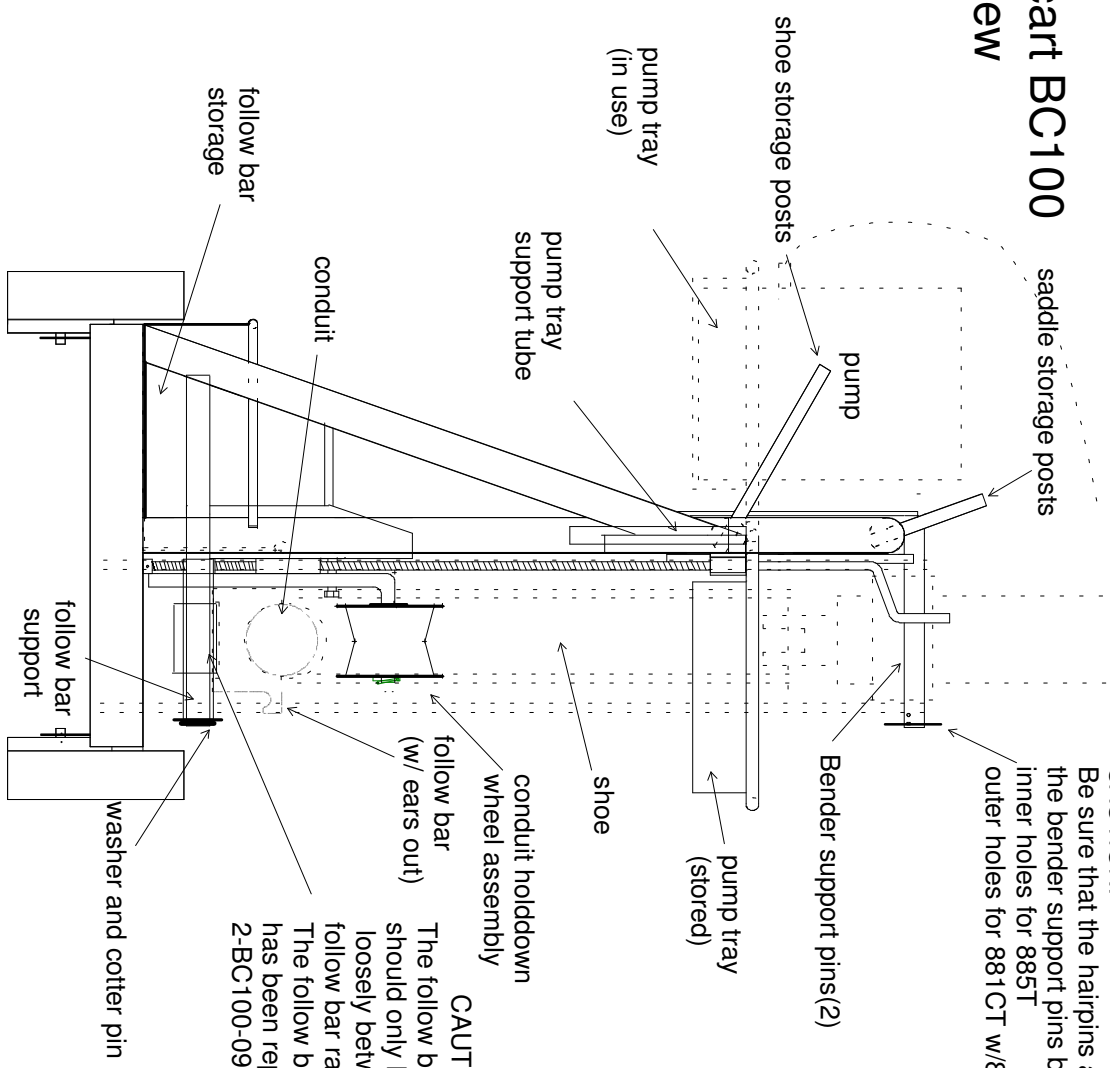
- Use a large C-clamp or welders vise grip to clamp the saddle to the conduit, this will prevent the shoe from sliding down the bend when pressure is released to check spring back.
- To eliminate dogleg on segment bends make a line lengthwise on the conduit (or use the seam mark). Make a mark on the face of the shoe. Be sure that the lengthwise line matches the mark on the shoe for each bend.

Bendcart BC100

shown w/885T bender



Bendcart BC100 End view



CAUTION:
Be sure that the hairpins are installed in the bender support pins before operating.
inner holes for 885T
outer holes for 881CT w/881A adapter

CAUTION:
The follow bar support strip should only be used if it fits loosely between the follow bar rails!!!!!!
The follow bar support strip has been replaced with 2-BC100-0900 support pegs