

## **Bendcart BC-100 assembly instructions**

Remove all Cardboard

Review drawing on page 3 and 4 of instruction pack.

### **Pump Tray**

Mount the pump tray by lowering the long bar down into the pump tray support tube on the back of the Bendcart

### **Mount Bender Supports (2)**

- remove the 3/8" bolts and spacers
- slide the bender supports over the frame top and cross member with the support pins pointing away from the saddle and shoe storage posts
- reinstall spacers and bolts
- tighten bolts

### **Install conduit holddown roller**

- remove the snap ring from the roller pin
- slide pin into one of the tubes on the back of the conduit leveler assembly (pg 4)
- the roller is built slightly off center. The center needs to be closer to the frame for the 885 bender and further from the frame for the 881 bender.
  - use lower tube when bending smaller size conduits
  - use upper tube when bending larger conduits
- reinstall snap ring

### **Mount Adjustable follow bar supports (2)**

- clip the support over the edge of the follow bar storage pan, one in front of the bender and one behind.
- screw the 3/4" x 10" bolt into one of the tapped holes that is slightly below the level of the bender roller. The purpose of these supports is to keep the follow bar from sagging to the floor when pressure is released upon completion of the bend.

# **Bendcart**

**model # BC 100**

Instruction manual and parts list

(rev 9/07)

The Bendcart is designed for use with the Greenlee #881CT and the #885T Hydraulic 2-21/2" to 4" EMT benders.

## **SAFETY**

Safety is an important part of the workplace. In addition to the normal workplace safety measures there are specific precautions that should be taken when using the Bendcart:

- Be sure all pins are installed in the proper locations
- Visually inspect the bender to see that it is properly mounted and that there are no parts missing or binding.
- Use proper lifting techniques when loading bender and changing parts
- Use only on a level surface
- The Bendcart is heavy, especially with extra shoes. Be very careful if moving over uneven or sloping ground.
- The brakes are designed only to prevent the bender from moving when loading conduit. They should not be relied upon when transferring or storing this unit.

## **LUBRICATION**

The swivel wheels have grease fittings and should be greased every 6-12 months. A light lubrication oil should be sprayed on the conduit leveler adjustment screw and slide plate monthly.

## **MOUNTING THE BENDER**

**A. 881 Bender (current model for EMT and GRC - cylinder is moved up or down when changing shoe sizes) - go to page 5**

**B. 885T bender ( old style for EMT only - roller adjusts up or down when changing shoe sizes)**

- Slide one of the bender side bars onto the bender support pins (see page 3)
- Slide the hydraulic cylinder onto the bender support pins
- Slide the second side bar onto the bender support pins
- Install the 2 hairpins into the proper holes to secure the bender to the Bendcart. (NOTE: the 881 bender w/881A adapter uses the outer holes, the 885T uses the inner set of holes)
- Install the follow bar roller (part of bender)
- Turn the conduit leveler adjustment handle to raise or lower the conduit leveler until the lower tube of the leveler assembly is approximately level with the top of the follow bar roller
- If necessary, relocate the 3/4"x10" bolts in the follow bar support pegs so that they are slightly below the top level of the roller

## **BENDING CONDUIT**

- Adjust the conduit holddown roller for the size conduit being bent. Remove the hairpin and install the roller rod into the upper or lower sleeves . The roller can be left in the upper sleeve, if so desired, but it may require more adjustment to level the conduit.
- The appropriate follow bar should be installed so that one end is resting on the roller(bender) and the other end is resting on the conduit leveler or the rear follow bar support peg with the follow bar ears outward. The bender supports are designed so that the bender can be slid either forward or back, as necessary. The middle is best for most situations.
- Set the pump in the pump tray and connect the hose to the ram. You may find it useful to purchase 90 deg hydraulic fittings for the pump and cylinder.  
(NOTE: the pump should be secured to the pump tray with bolts, wire or other means.)
- Set the appropriate shoe onto the follow bar and connect it to the ram yoke  
(NOTE: this may be made easier by pumping the ram down several inches.)
- Install the saddle and the operation is complete.
- Slide conduit onto follow bar and under the conduit holddown roller
- Install the saddle (NOTE: for a one man operation you may find it easier to pull the shoe back and up with a wire, bungee cord , or some other means so that the saddle is touching the front of the follow bar. Don't forget to remove the wire or cord before bending!!!!)
- Start bend
- turn the conduit leveler adjustment handle until the conduit behind the shoe is level.
- Finish bend For accurate bends using a protractor, readjust the back of the conduit to level when you are within a few degrees of the desired bend.

**WARNING:** If the conduit is not properly aligned there is a possibility of the saddle pin getting caught under the Bendcart crossbar when making 90 deg bends. This is more of a problem on smaller conduits as the pin can extend thru the saddle several inches. Be sure that the conduit is centered in the bender and is parallel to the Bendcart when starting the bend.

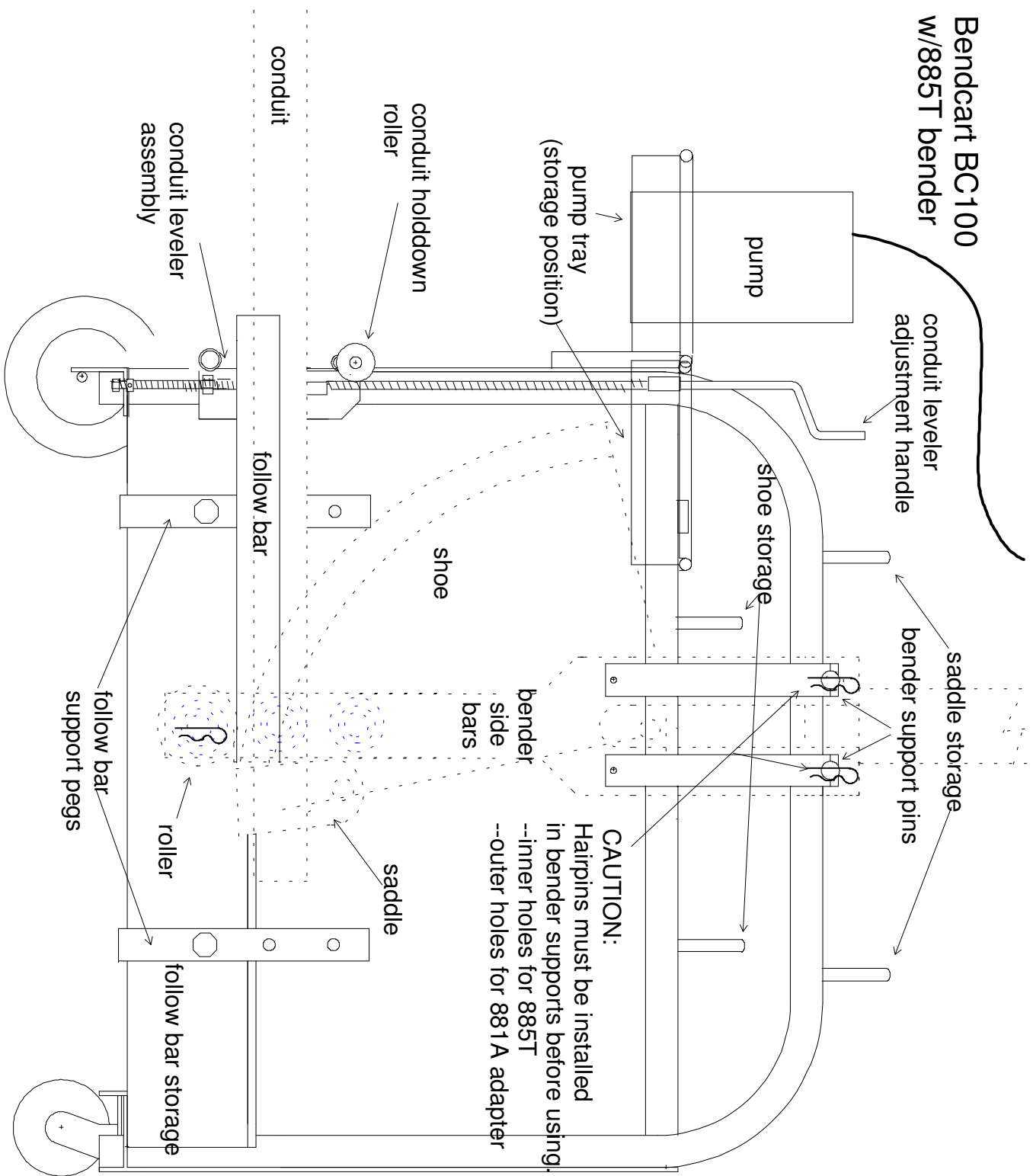
## **MISCELLANEOUS**

- See page 3 for the pump tray storage and "in use" positions.
- The unit can be made reasonably secure by threading a heavy chain through the saddles, through the holes of the shoe, through the pump handle and around the bender.

## **TIPS**

- Use a large C-clamp or welders vise grip to clamp the saddle to the conduit to prevent the shoe from sliding down the bend when pressure is released to check spring back.
- To eliminate dogleg on segment bends make a line lengthwise on the conduit (or use the seam mark) Make a mark on the face of the shoe. Be sure that the lengthwise line matches the mark on the shoe for each bend.

# Bendcart BC100 w/885T bender



# Bendcart BC100 End view

